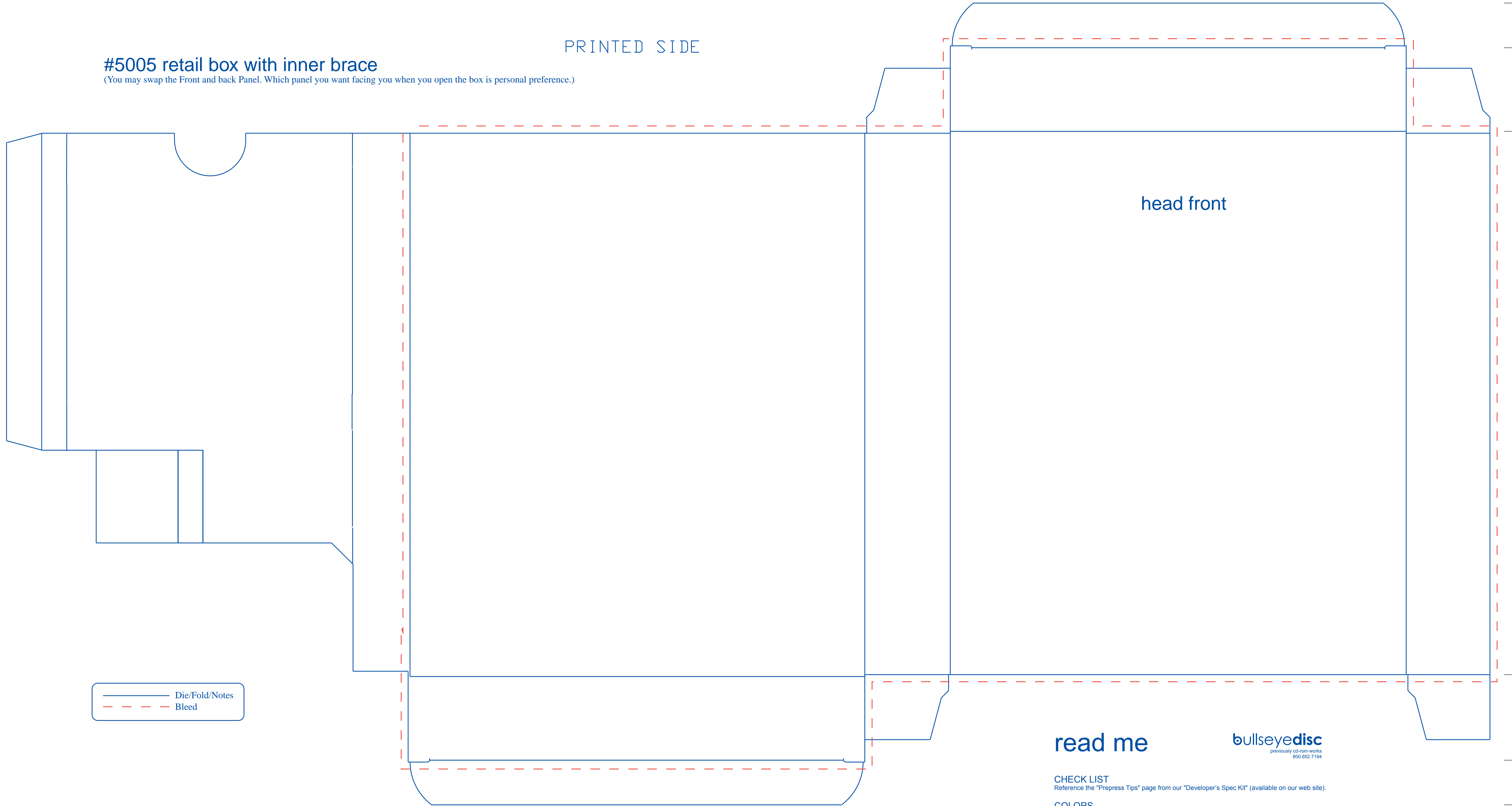




PRINTED SIDE

#5005 retail box with inner brace

(You may swap the Front and back Panel. Which panel you want facing you when you open the box is personal preference.)



— Die/Fold/Notes
 - - - - - Bleed

head front

read me

bullseyedisc
previously cd-rom-works
 800.652.7194

CHECK LIST
 Reference the "Prepress Tips" page from our "Developer's Spec Kit" (available on our web site).

COLORS
 Use only Process colors (CMYK) and/or Pantone spot colors from the "Pantone Formula Guide SOLID". (Note: there is a set-up fee for each Pantone color used. If you want to print with Pantone colors, please call for a custom quote.)

BLEED
 Provide 1/4 - 1/2 inch bleed on all edges. ("Bleed" is the part of the artwork which extends past the template cut line.)

QUARK USERS:
 Will need to set template picture box fill color to NONE.

