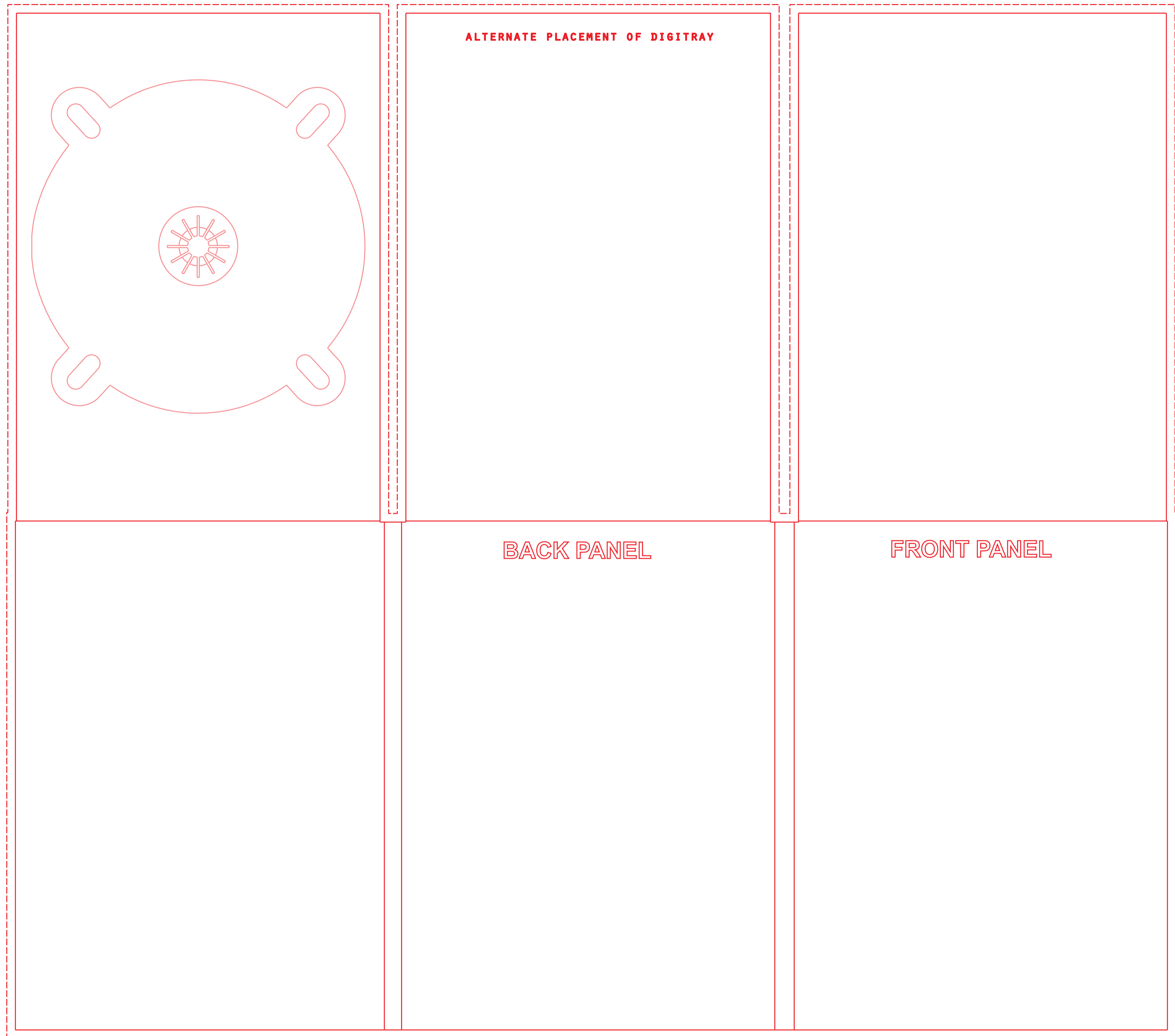


# 6 panel DVD digipak (design #25012)

NOTE: Depending on the type of plastic Digi-tray available when we run your order, the disc recess in the Digi-trays may be located in the center of the tray, or about 3/8" below center. If you are wanting your artwork to align with the disc recess, please contact us for details.



— Die/Fold/Notes  
- - - Bleed

## read me

**bullseyedisc**  
previously cd-rom-works  
800.652.7194

### CHECK LIST

Reference the "Prepress Tips" page from our "Developer's Spec Kit" (available on our web site).

### COLORS

Use only Process colors (CMYK) and/or Pantone spot colors from the "Pantone Formula Guide SOLID". (Note: there is a set-up fee for each Pantone color used. If you want to print with Pantone colors, please call for a custom quote.)

### BLEED

Provide 1/4 - 1/2 inch bleed on all edges. ("Bleed" is the part of the artwork which extends past the template cut line.)

QUARK USERS: Will need to set template picture box fill color to NONE.