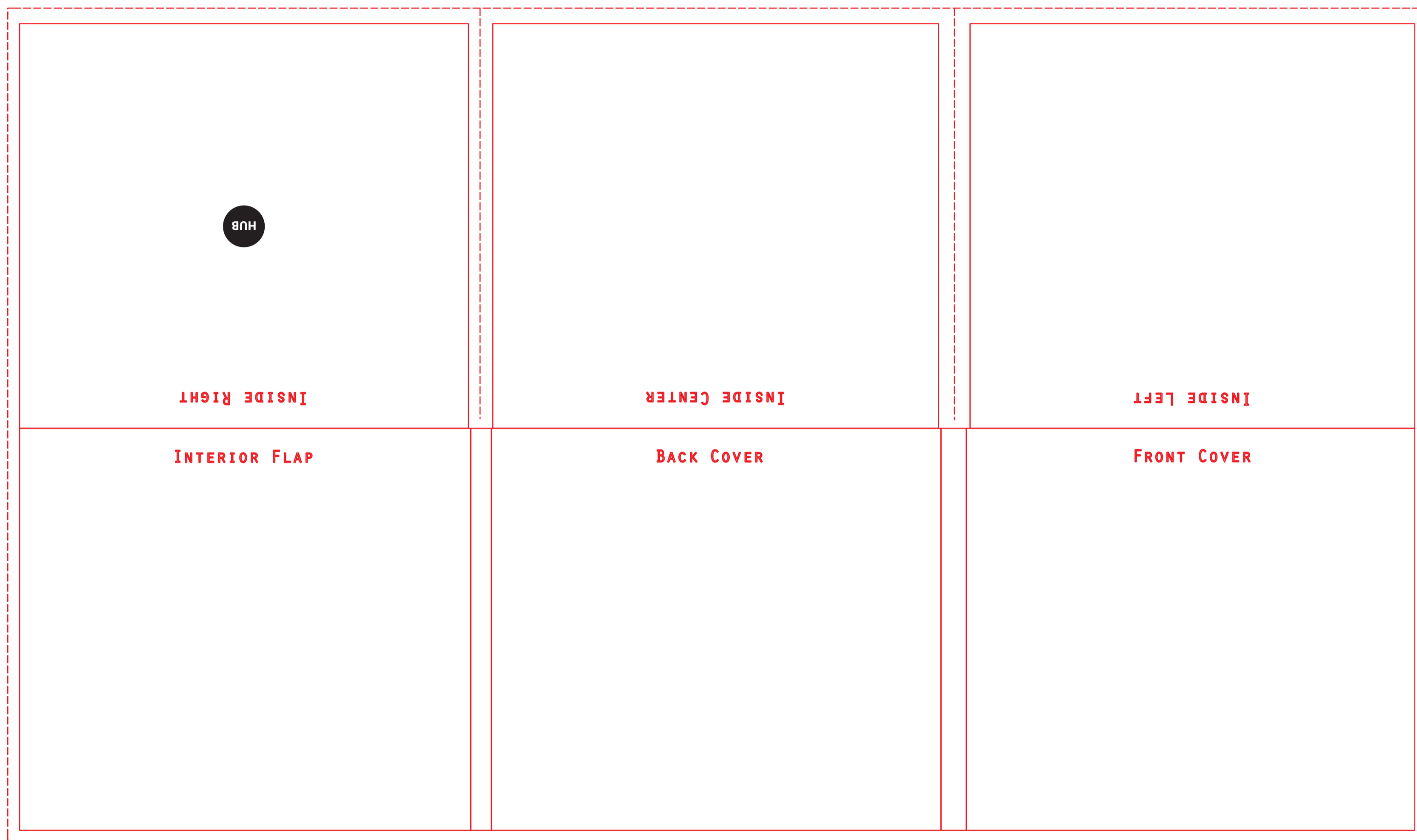


# 6 panel CD Hubpak (short run)

HUB CAN, ALTERNATIVELY, BE GLUED TO THE CENTER PANEL. PLEASE CONFIRM PREFERRED PLACEMENT WITH YOUR CSR.



## read me

**bullseyedisc**  
previously cd-rom-works  
800.652.7194

### DO NOT ALTER THE DIMENSIONS OF THIS TEMPLATE

- Remember to do a final spelling check.
- The digital print manufacturing process used for short run Duplication packaging only prints CMYK, therefore, Pantone colors will be converted to CMYK.
- Please provide 1/4 - 1/2 inch bleed on all edges. ("Bleed" is the part of the artwork which extends past the template die line.)
- We suggest keeping all text 1/4 inch in away from the template lines to allow for possible shifts in trimming.
- Send all fonts used in artwork. Unless you are using Illustrator or InDesign, then you can convert all type to outlines, and avoid the need to send fonts. (I.E. unlock all, select all, select "Type>Create Outlines", then save your file with a new name, type converted to outlines cannot be edited.)
- Make sure all images are high resolution (300- 600 dpi) and are embedded or, if linked, please send images with the file.
- Super Blacks do not exceed C: 70 / M: 60 / Y: 40 / K: 100%.
- We recommend sending hard copy prints or a PDF file for reference.
- QUARK USERS: Will need to set template picture box fill color to NONE.